

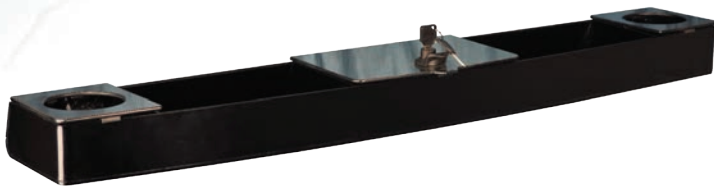
23-009/23-010

## ACRYLIC CONSOLE

WILL FIT E-Z-GO® TXT®

### INSTALLATION INSTRUCTIONS

#### INCLUDED:



Acrylic Console



Mounting Hardware



Self Tapping Screws

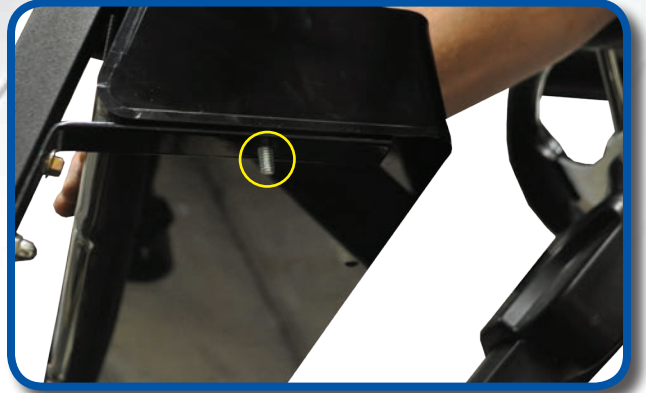
**Madjax® recommends professional installation. If you choose to not have this product installed by a professional, we highly recommend that you exercise caution, care, and patience when installing this product as it involves drilling holes into your cart's struts.**

**1**  
Mount bracket to cart through preexisting hole using hardware provided. Use self-tapping screws to anchor the remaining hole on the bracket. Repeat this process of the other side.



**2**  
Align console to brackets. Check the location of the mounting holes to make sure console is properly aligned.

3  
Using supplied hardware, place screw through console as shown.



4  
Once aligned, tighten hardware. Repeat process on the other side.



E-Z-GO®, E-Z-Go® TXT®, and E-Z-Go® RXV® are registered trademarks of Textron Innovations, Inc. ("Textron"). Reference to E-Z-Go®, TXT®, or RXV® or any of Textron's trademarks, word marks, or products is only for purposes of identifying golf carts with which this Madjax product is compatible. Madjax products are aftermarket parts and are not original equipment parts. Madjax is not connected to, affiliated with, sponsored by, or endorsed by Textron or any of its subsidiary companies.