

BUCKET HARNESS FOR ELECTRIC CLUB CAR® PRECEDENT® INSTALLATION INSTRUCTIONS

Electric Club Car® Precedents® manufactured after January 1, 2008 require an additional harness to allow the installation of light kits. Instructions for installing the harness on carts with 12 volt batteries follows. See the NOTE in Step 17 for installing this harness on Club Car® Precedents® with an 8 volt battery configuration. A voltage limiter is also recommended for Precedents® with an 8 volt battery configuration. Please refer to the battery diagrams on the last page of these instructions.

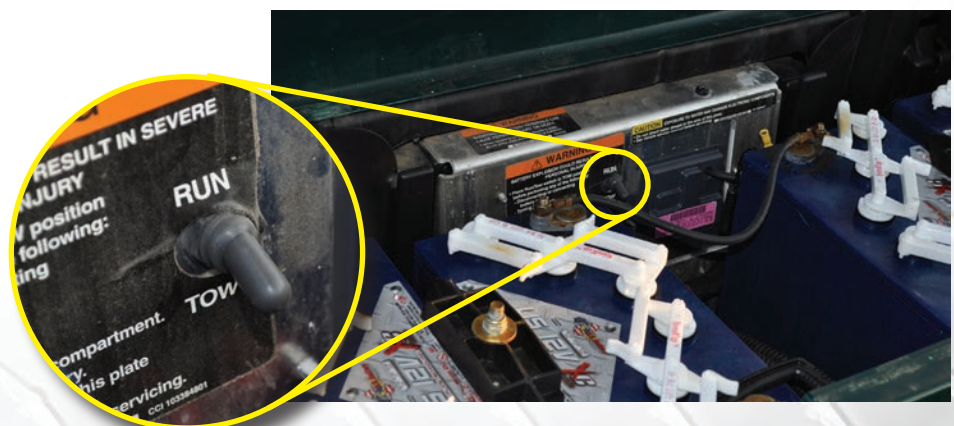
1. If the vehicle is ON, turn the key switch to the OFF position.



2. Remove the front seat bottom cushion to expose battery compartment.



3. Place RUN/TOW switch in the TOW position



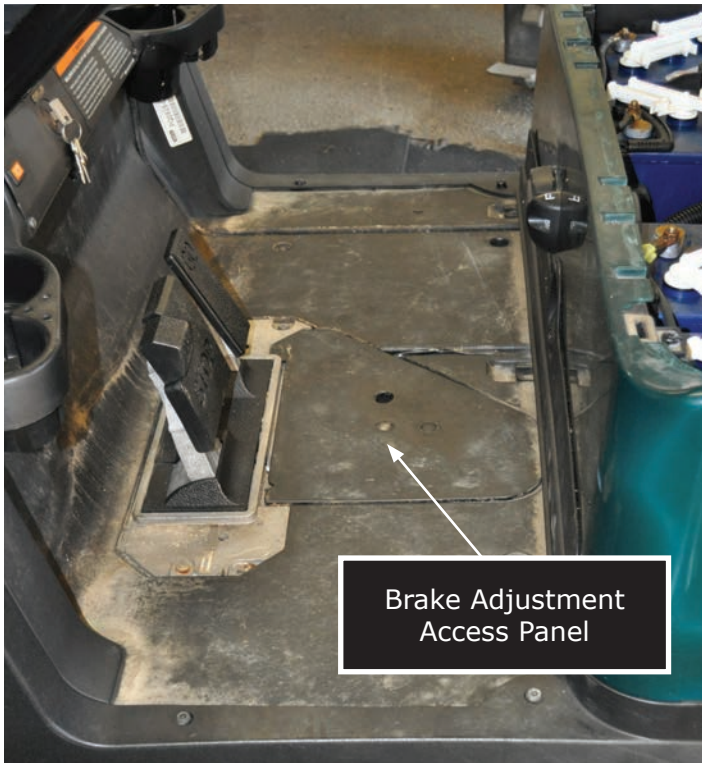
4. Disconnect the wire from the negative terminal on battery #4 on the driver's side. (See Battery Diagram on the last page of these instructions)



5. Loosen the four screws that secure the floor mat to the vehicle. Lift out the floor mat.



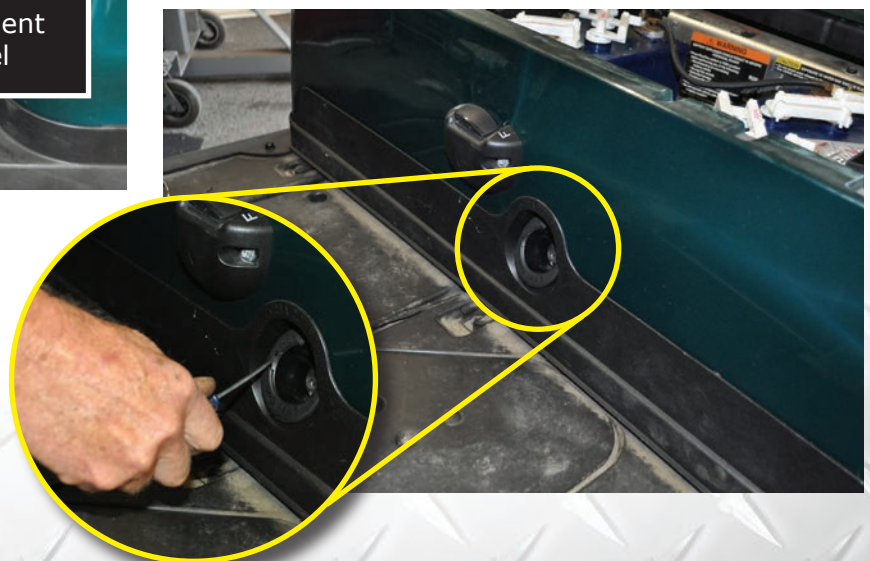
6. Remove the brake adjustment access panel.



7. Remove and retain the front body screws.



8. Using a small screwdriver, pry charge receptacle cover from vehicle.



9. Remove and retain the three screws that secure the lower body trim to the body and lift off the lower body trim.



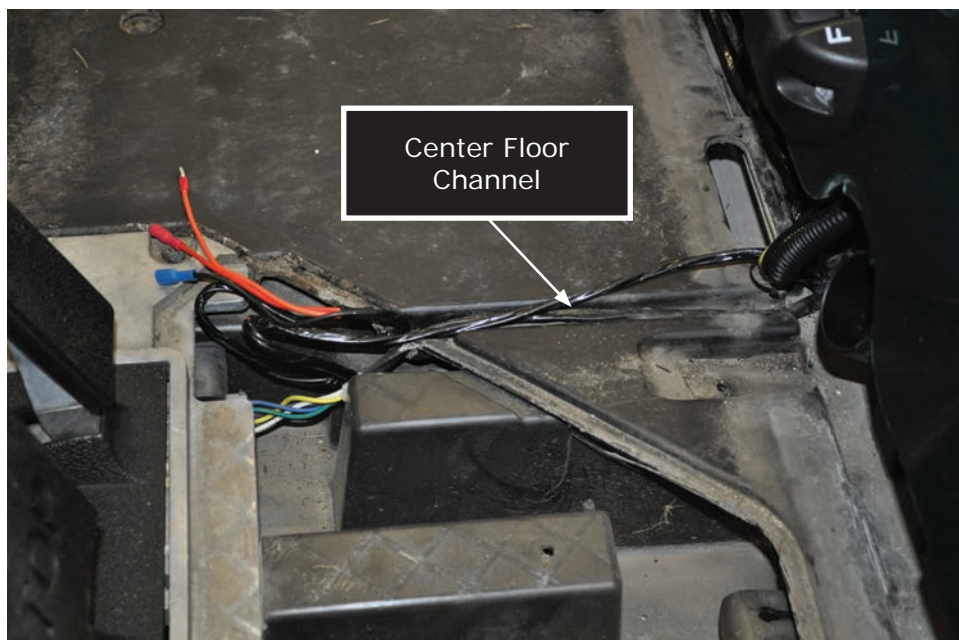
10. Position the tail lights in the rear of the vehicle. From the top edge of the rear bumper, measure upward 1-1/2 inches and draw a horizontal line. From the edge of the vehicle body that begins to curve toward bag well, measure horizontally 2-1/4 inches and draw a vertical line. At the intersection of the two lines, mark with a center punch. Use a 1-1/2 inch hole saw to drill holes.



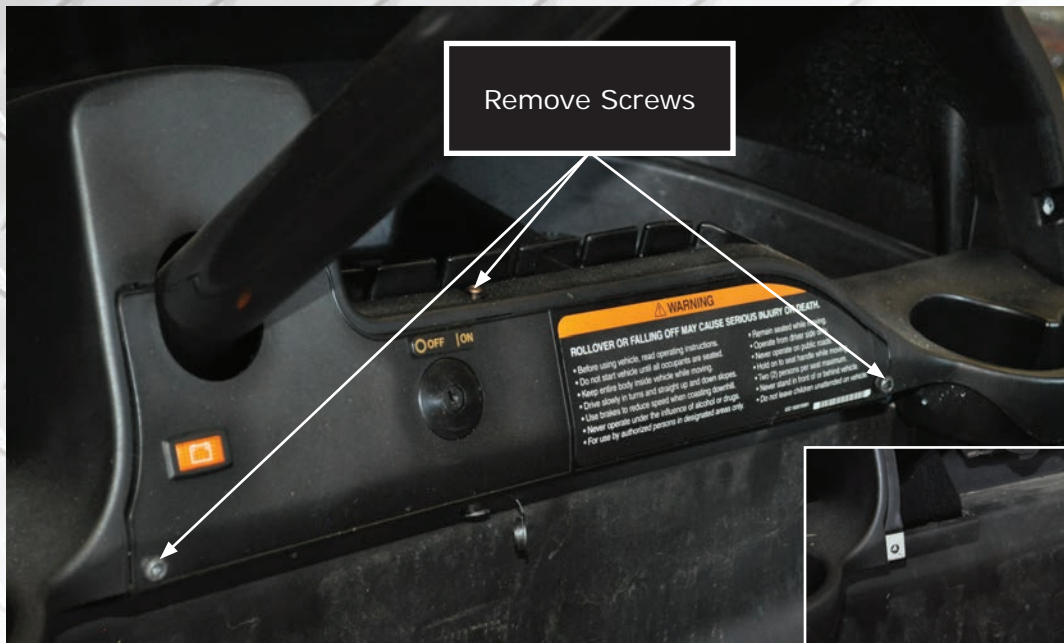
11. Thread the 12-pin connector and Brake Light Accessory Wires from inside the battery compartment through the hole where the existing main harness feeds.



12. Follow the path of the existing main harness and pull Brake Light Accessory Wires through the center floor channel that leads to the brake compartment.



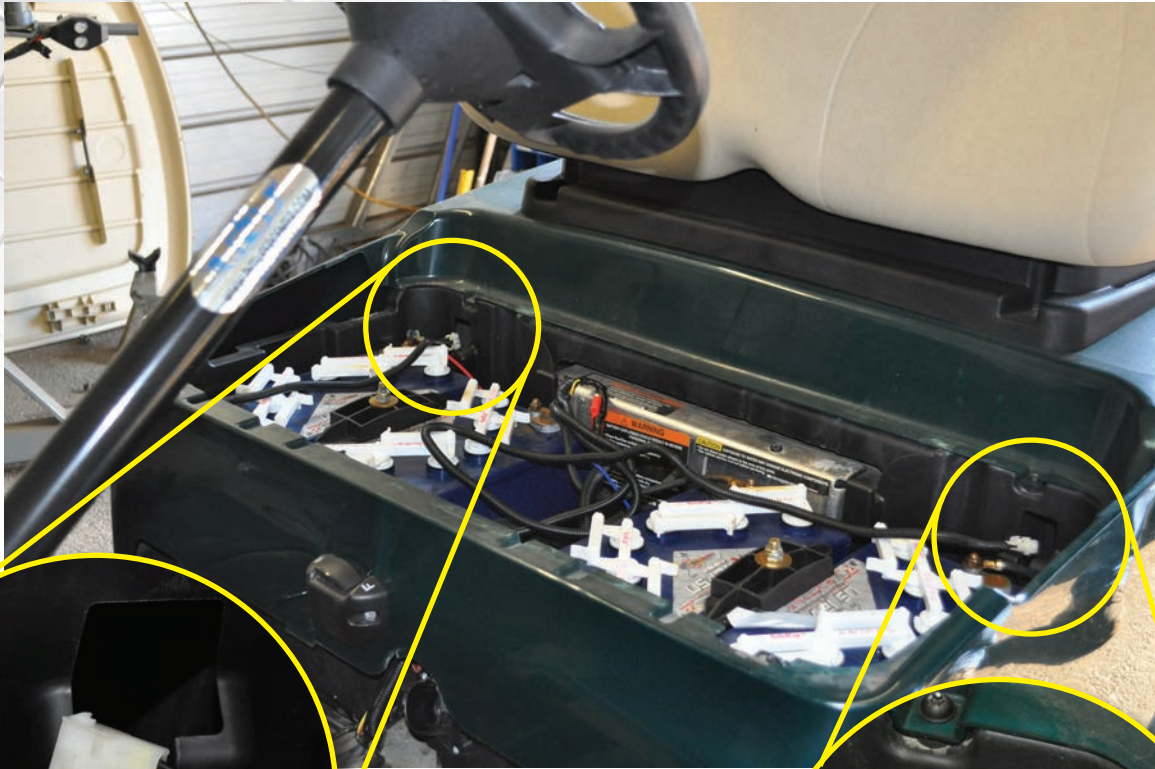
13. Remove and retain the screws that secure the dash panel to vehicle. Lift off panel.



14. Following the path of the main harness, feed the 12-pin connector portion of new harness along the floor channel on passenger side of vehicle and up under the dash. Connect the red male bullet connector (gray wire) on the new harness to the red female bullet connector (gray wire) on the existing harness.



15. Using a wire snake or fish tape (not supplied), route the tail light wires through the holes in the upper corners of the battery compartment on both the passenger's and driver's sides. The passenger's side has the yellow wire in the 3-pin connector. Feed the snake through the tail light holes drilled in Step 10.

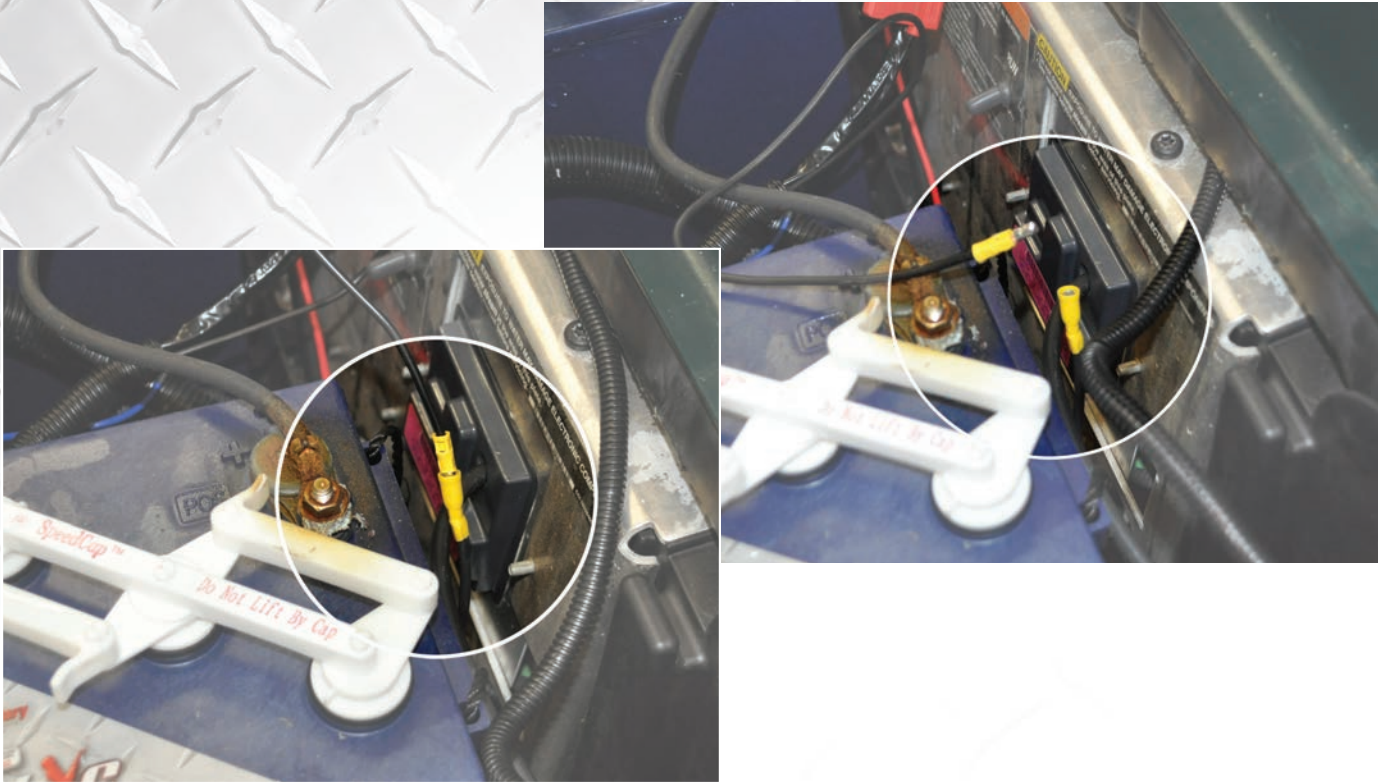


Yellow Wire goes on Passenger Side



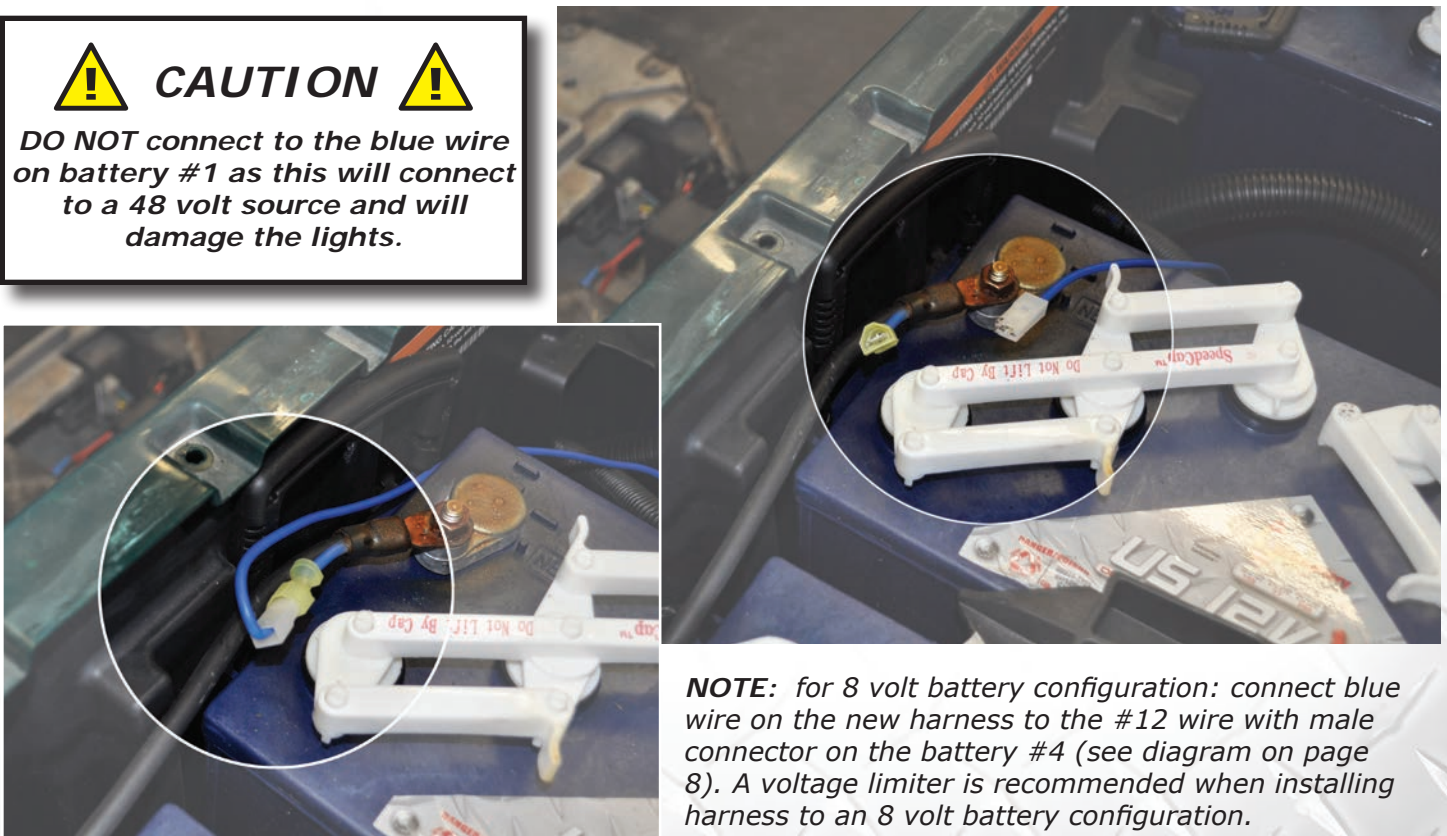
Feed through hole in tail light position on each side of vehicle

16. Behind battery #3 (see illustration) is a black #12 wire with a yellow female bullet connector. Connect the yellow male bullet connector on the new light harness with this yellow female bullet connector.



17. Connect blue wire on the new harness to the #12 wire with male connector on the battery #3 (see diagram).

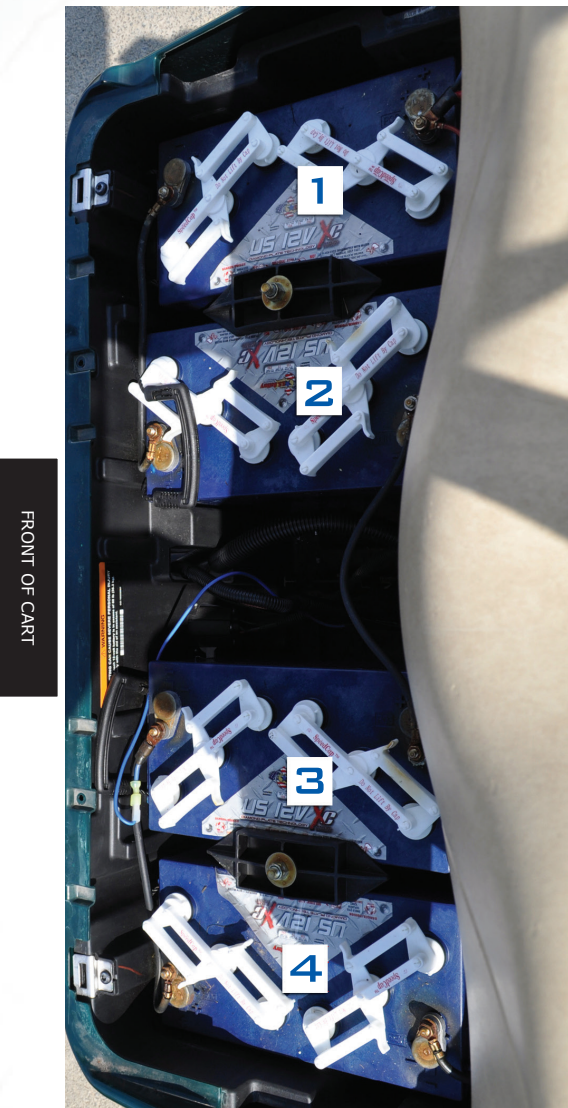
⚠ CAUTION ⚠
DO NOT connect to the blue wire on battery #1 as this will connect to a 48 volt source and will damage the lights.



NOTE: for 8 volt battery configuration: connect blue wire on the new harness to the #12 wire with male connector on the battery #4 (see diagram on page 8). A voltage limiter is recommended when installing harness to an 8 volt battery configuration.

18. Install Light Kit according to manufacturer instructions.
19. Reconnect the wire to the negative battery terminal of Battery 4 that was disconnected in step 4.
20. Turn RUN/TOW switch to RUN position (see step 3 for illustration). Turn Key switch on ON position (see step 2 for illustration).
21. Test Lights. (NOTE: Brake lights will not work unless the RUN/TOW switch is in the RUN position and the key switch is turned to the ON position)
22. Replace lower body trim (see step 9), receptacle cover (see step 8), front body screws (see step 7) brake adjustment access cover (see step 6), floor mat (see step 5) and dash access cover (see step 13).

12-Volt Battery Configuration



8-Volt Battery Configuration

