



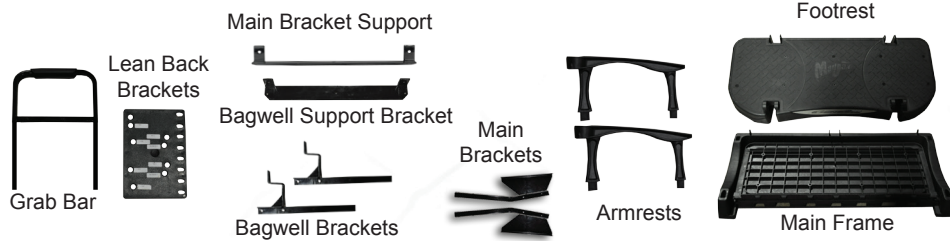
GENESIS 250/300 REAR SEAT WILL FIT E-Z-GO® RXV® INSTALLATION INSTRUCTIONS

INCLUDED:

- Hardware Packs 1-8
- Grab Bar
- Lean Back Brackets
- Armrests
- Footrest
- Main Frame
- Main Brackets
- Bagwell Brackets
- Main Bracket Support
- Bagwell Support Bracket

TOOLS NEEDED:

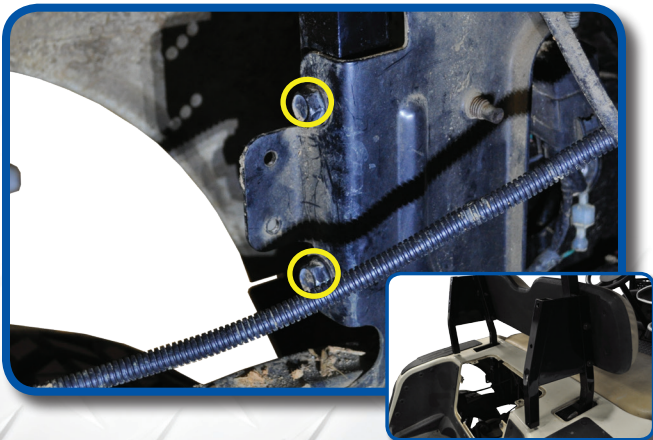
- Drill
- 17mm Socket
- 17mm Wrench
- 14mm Socket
- 10mm Socket
- #3 Phillips Bit
- 13mm Wrench



Madjax recommends professional installation. If you choose to not have this product installed by a professional, we highly recommend that you exercise caution, care, and patience when installing this product as it involves drilling holes into your cart's body.

1

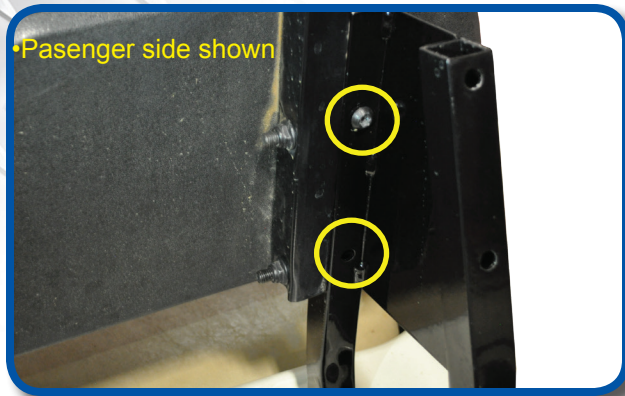
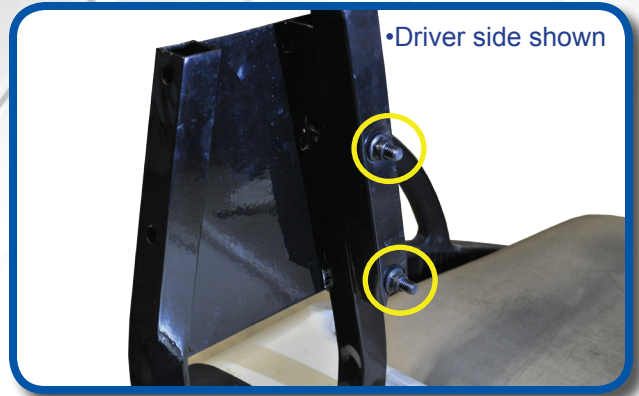
Remove factory canopy, rear struts, seat back and motor cover. Retain hardware.



Attach main brackets as shown on both sides using hardware retained from Step 1.

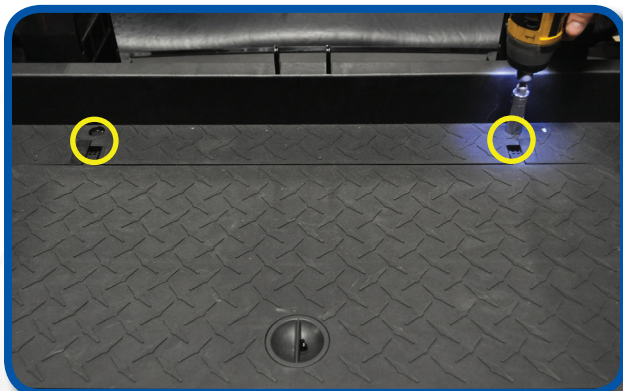
2

3
Attach factory struts to seat bracket as shown using hardware retained from Step 1.



4
Attach seat back to rear struts using hardware retained from Step 1.

5
Attach support bracket to main seat bracket as shown using hardware from pack 1.

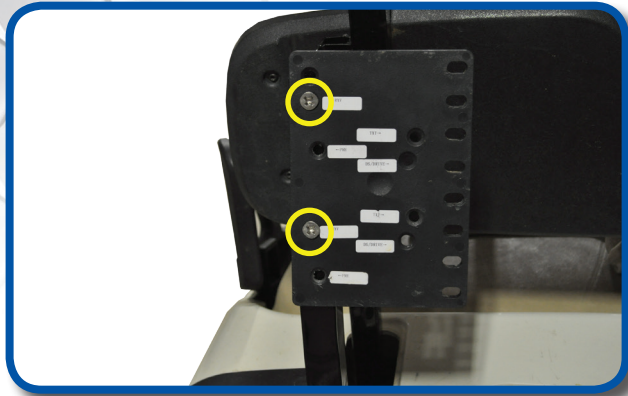


6
Attach main polyboard to support bracket using hardware from pack 2.

7
Attach main polyboard frame to bagwell bracket using hardware in pack 2.



8
Using the appropriate labeled hole for your cart attach lean back bracket to main seat bracket using hardware from pack 3.



9
Choose desired height and attach lean back cushion to bracket using hardware from pack 4.



10
Use countersunk #3 Phillip bolt to attach bagwell bracket to support bracket and tighten using hardware from pack 5. **Must be done before next step.*



11

Attach bagwell bracket to cart and support bracket using hardware from pack 5. For middle hole in support bracket use 8mm hardware, the 2" washer goes underneath the cart.

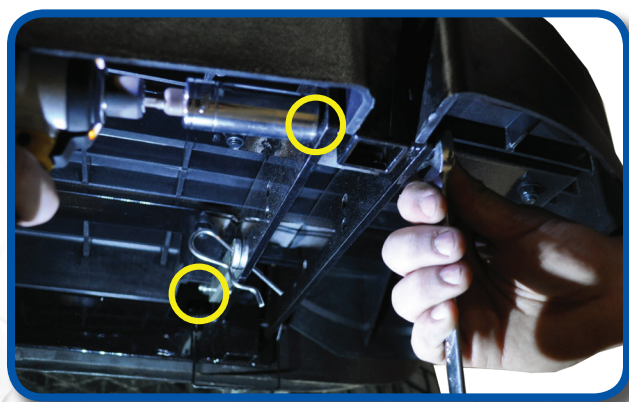


12

Attach armrest to poly seat frame as shown using hardware from pack 6.

13

Attach footrest to bracket as shown using hardware from pack 7.



14

Attach grab bar to footrest as shown using hardware from pack 7.

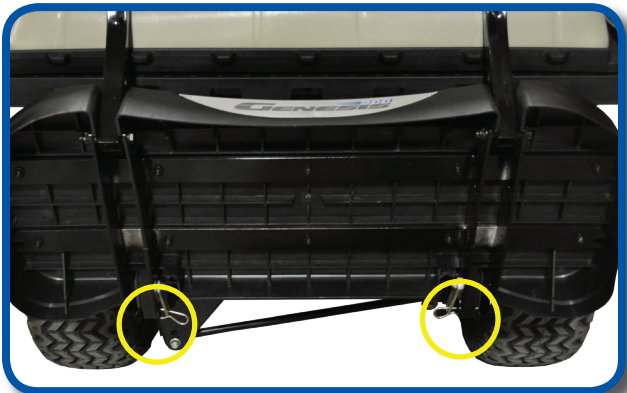
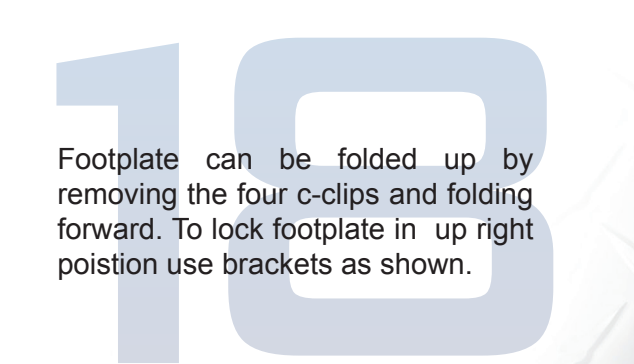
15
Using quick release pins from hardware pack secure footrest to bagwell bracket as shown.



16
Attach seat bottom cushion as shown using hardware from pack 8.



17
Re attach roof using hardware retained from Step 1.



18
Footplate can be folded up by removing the four c-clips and folding forward. To lock footplate in up right position use brackets as shown.

INSTALLATION COMPLETE

VISIT WWW.MYMAJAX.COM FOR MORE INSTALLATION VIDEOS

E-Z-GO®, E-Z-Go® TXT®, and E-Z-Go® RXV® are registered trademarks of Textron Innovations, Inc. Club Car®, Club Car® Precedent®, and Club Car® DS® are registered trademarks of Ingersoll Rand, Inc. Yamaha®, Yamaha® Drive®, G-14®, G-16®, G-19®, and G-22® are registered trademarks of Yamaha Golf-Car Company. Any reference to Club Car®, E-Z-Go®, or Yamaha® or their associated trademarks, word marks, and products are only for purposes of identifying golf carts with which this Madjax product is compatible. Madjax products are aftermarket parts and are not original equipment parts. Madjax is not connected to, affiliated with, sponsored by, or endorsed by either Textron Innovations, Inc., Ingersoll Rand, Inc., Yamaha Golf Cart Company, or any of their parent or subsidiary companies.

HARDWARE PACKS

Pack 1

- 2 – 10x50mm hex bolt
- 4 – 10x20mm flat washer
- 2 – 10mm lock nut
- 4 – Rubber Washers

Pack 2

- 2 – 8x60mm hex bolt
- 4 – 8x15mm flat washer
- 2 – 8mm lock nut
- 6 – Rubber Washers
- 2 – 10x50mm Hex bolt
- 4 – 10x20mm flat washer
- 2 – 10mm locknut

Pack 3

- 4 – 8x50mm countersunk #3 Phillips
- 4 – 8x15mm flat washer
- 4 – 8mm locknut

Pack 4

- 4 – 6x25mm hex bolt
- 4 – 6x15mm flat washer
- 4 – 6mm lock washer

Pack 5

- 2 – 6x50mm hex bolt
- 4 – 6x15mm flat washer
- 2 – 6mm locknut
- 8 – Rubber Washers
- 1 – 10x85mm Hex bolt
- 2 – 10x20mm flat washers
- 1 – 10mm lock nut
- 1 – 2"x2" square washer
- 2 – 8x25mm countersunk #3 Phillips
- 2 – 8x20mm flat washers
- 2 – 8mm locknut

Pack 6

- 4 – 8x30mm hex bolt
- 4 – 8x15mm flat washer

Pack 7

- 4 – 10x75mm hex bolt
- 8 – 10x20mm flat washer
- 4 – 10mm Locknut
- 4 – Quick release pins (easy remove hardware for folding in the foot plate)
- 8 – Rubber Washers

Pack 8

- 8 – 8x40mm countersunk

GENESIS 300/250 REAR DELUXE SEAT FOR E-Z-GO RXV

WARRANTY PARTS EXPLODED VIEW DIAGRAM

